

# Best Praxis Digitalisierung mit AV



Felix Zwick  
MOIA GmbH



Was hörst du auf der

← Vorsetzen Überbrücke → Vorsetzen Marktbrücke →

Für immer statt für keine Nacht.

BOSS

111 HagenCity üB. Elbphilharmon.

HOCHBAHN

1008

REWE CENTER HAGEN

HH-VB 1608

393

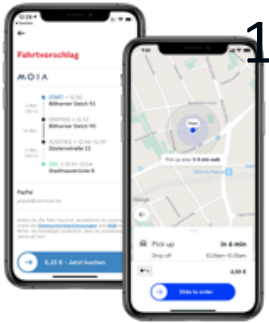
393

MOIA

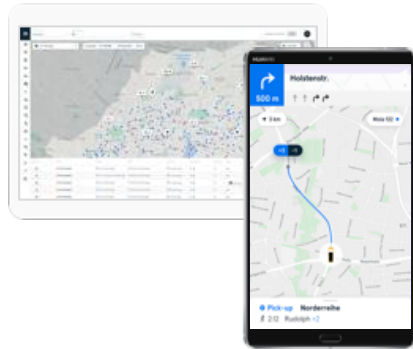
HH-MI 722E

WU-U 6175

1



2



3



4

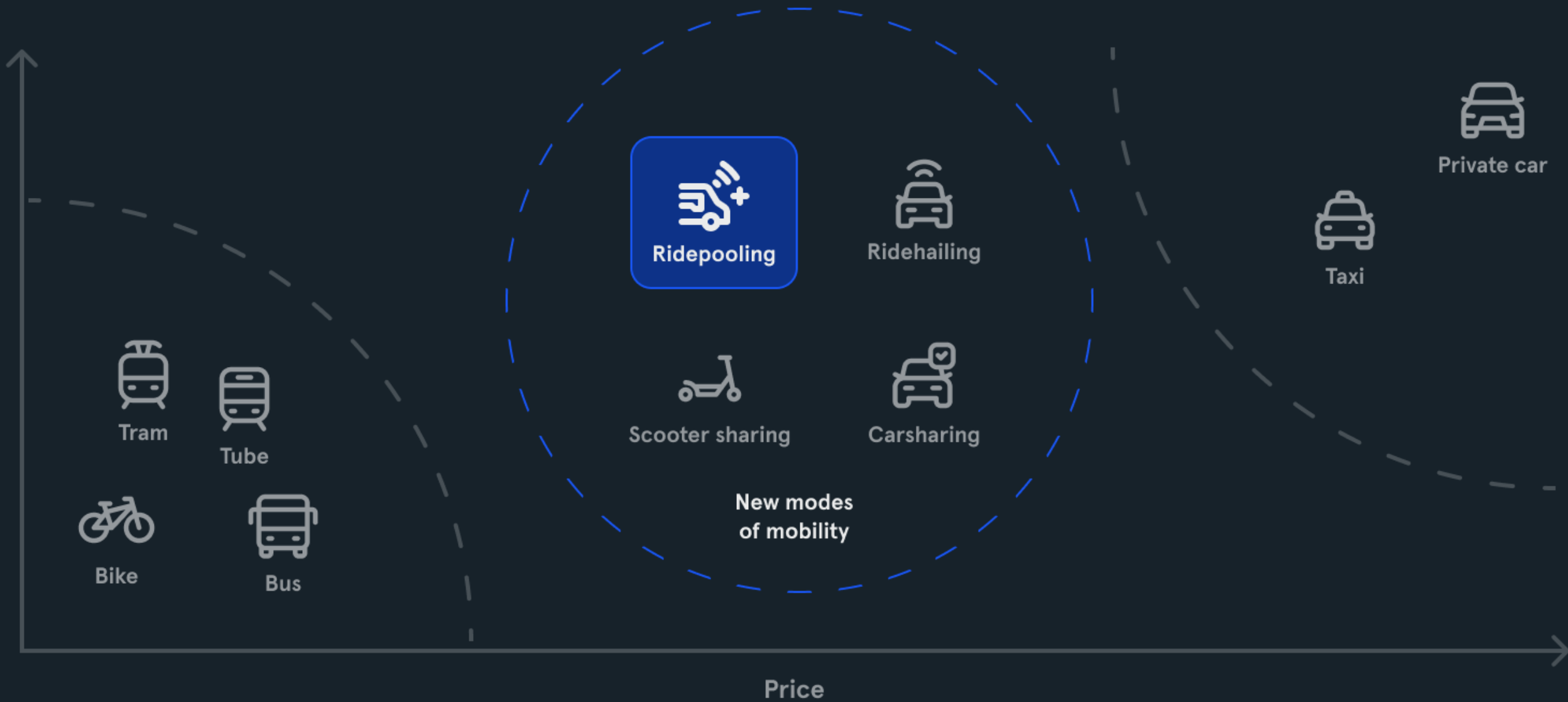


5



Ridepooling Wertschöpfungskette

Convenience



Price



# MOIA Begleitforschung

## Project Duration

June 2019 - September 2021

## Consortium

Karlsruhe Institute of Technology  
Technical University of Munich



## Project Lead

Dr.-Ing. Martin Kagerbauer

## Project Components



Ridepooling users



Agent-based transport simulation  
Fleet simulation

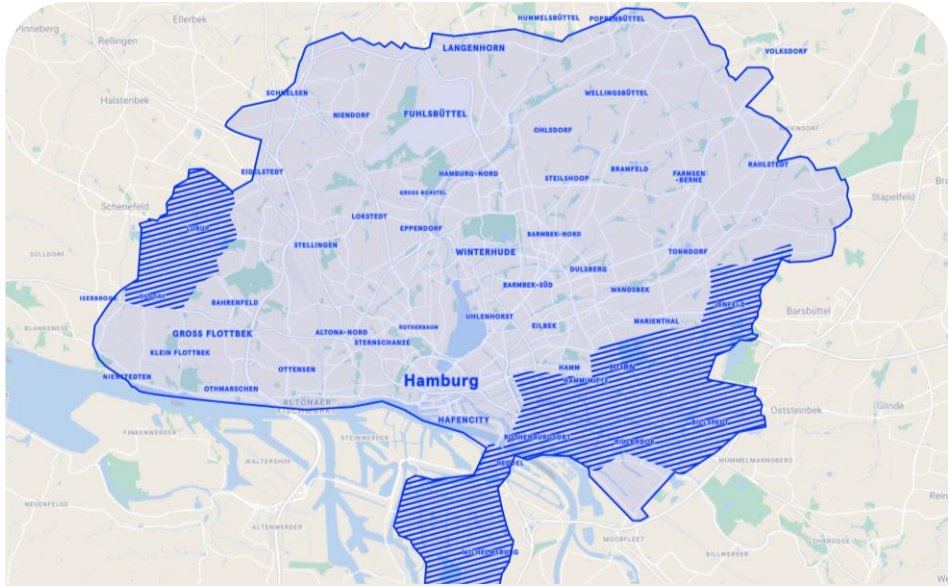


Scenario development



Seit Januar 2023 ist MOIA  
offizieller Bestandteil des  
**Hamburger ÖPNV-Systems**

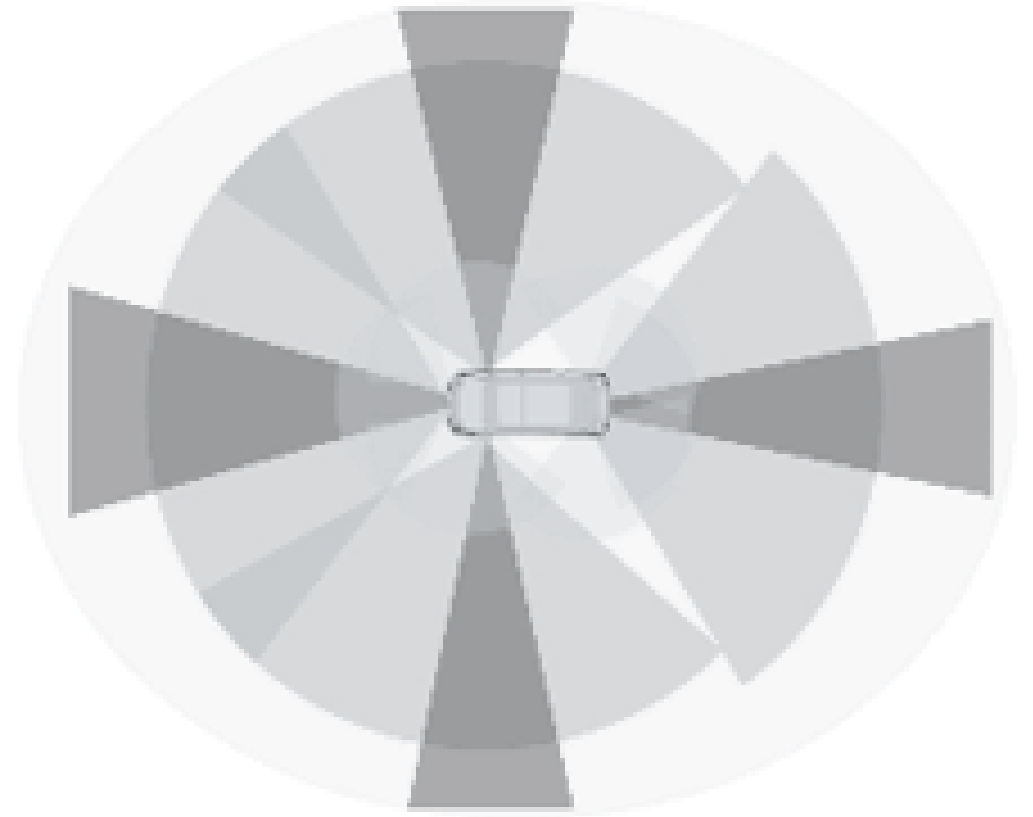
MOIA



Digital 



Autonom?



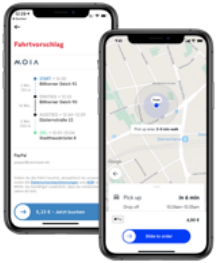


cruise

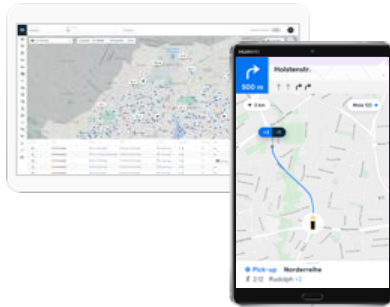


WAYMO

1



2



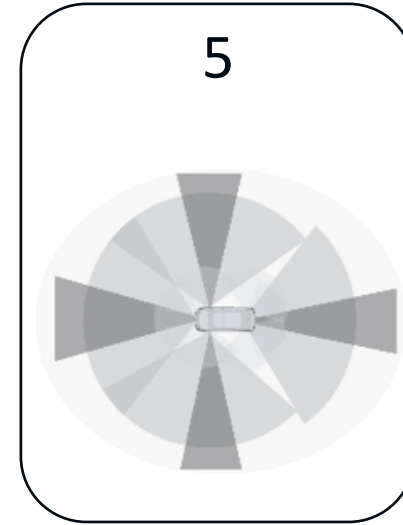
3



4



5



6



Ridepooling Wertschöpfungskette autonom



MOIA  
SELF-DRIVING - VEHICLE

ADMT  
<https://www.dlr/next-data>  
<https://mbdy.com/mv>

D BS VN189E



# LIKE



**SHECK**

26.060.284,14

Verwendungszweck: Für eine neue Axa der Mobilität



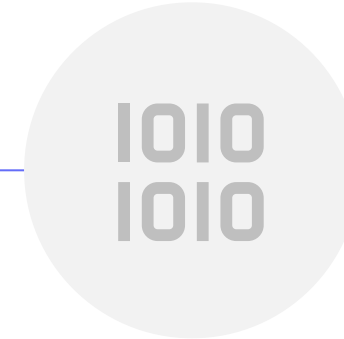
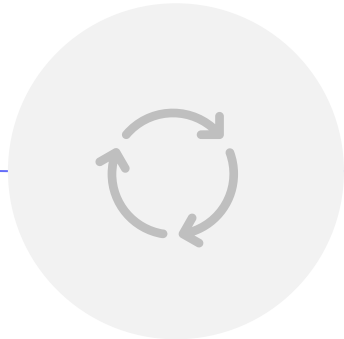
App

Software

Betreiber

Shuttle

Selbstfahrsystem



MOIA



HOCHBAHN

HOLON

(in mobileye)

MOIA  
OPERATIONS



Wissenschaftl. Begleitforschung: KIT



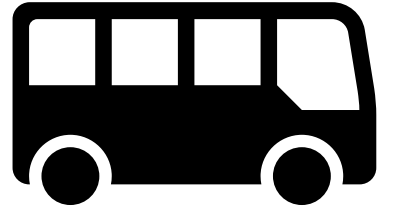
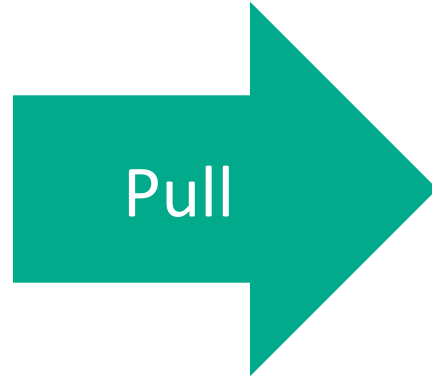
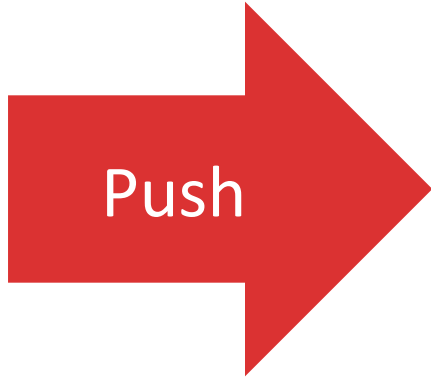
Projektbegleitung: BVM

# Wissenschaftl. Begleitforschung



MOIA

The word 'MOIA' is displayed in a large, bold, black, sans-serif font.



# MOIA



**Städte und  
Behörden**



**Fahrzeug-Hersteller  
SDS-Anbieter,  
Mobilitätsdienstleister**



**Betriebs-  
anbieter**





+







