

Munich Mobility Research Campus

MORE - Mobilität der Zukunft erfahrbar machen

Dr.-Ing. Eftychios Papapanagiotou

Professur für Intelligente, Multimodale Verkehrssysteme
Universität der Bundeswehr München

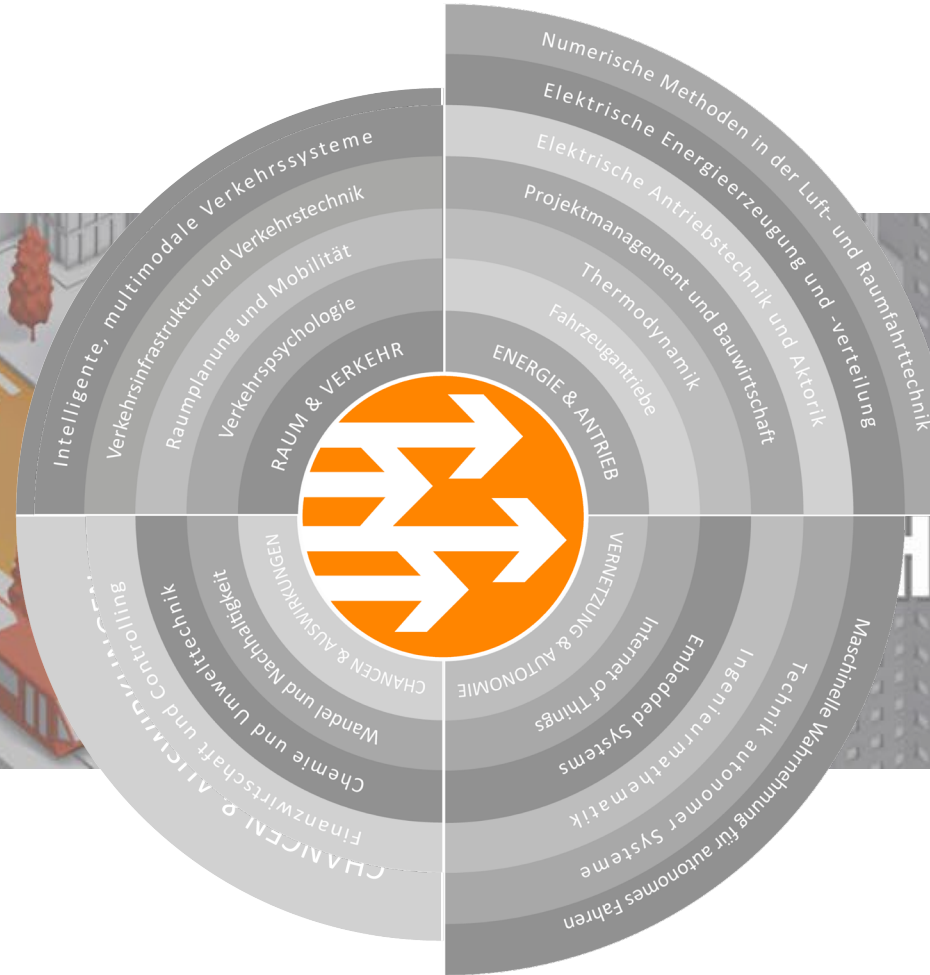
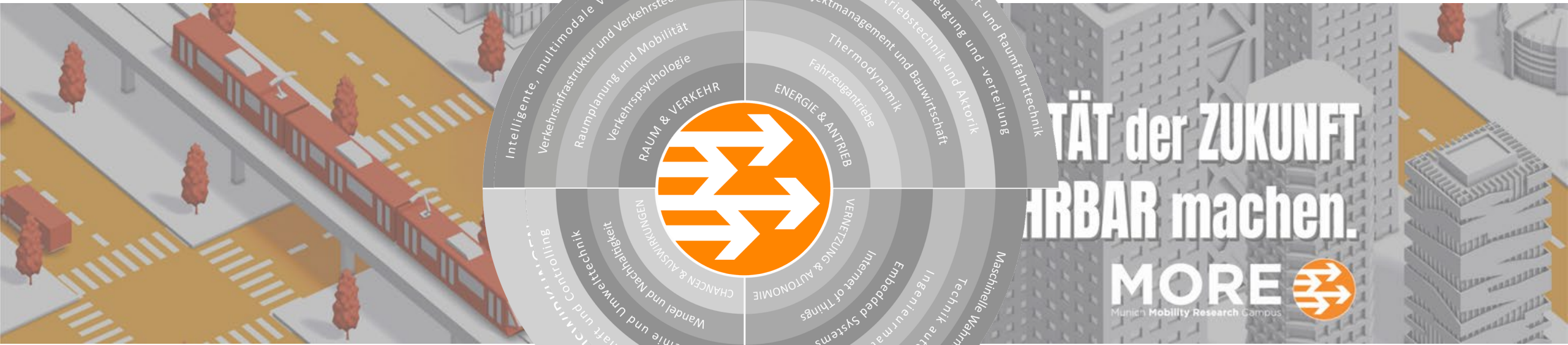
DVWG-Summit 2024 | 17.04.2024
Reallabore: Von der Forschung in den Alltag



Gefördert durch dtec.bw

 Finanziert von der
Europäischen Union
NextGenerationEU

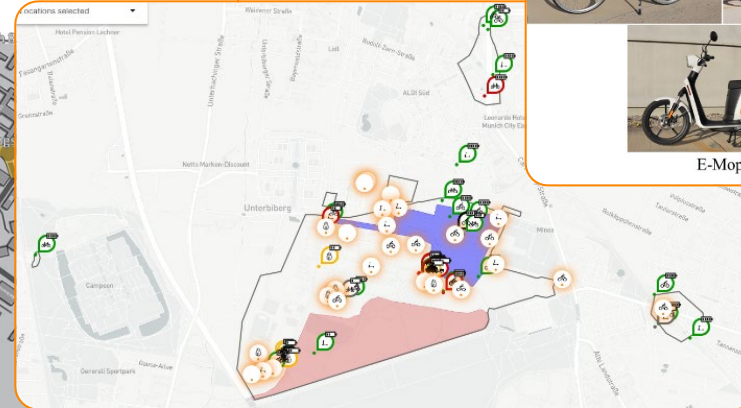
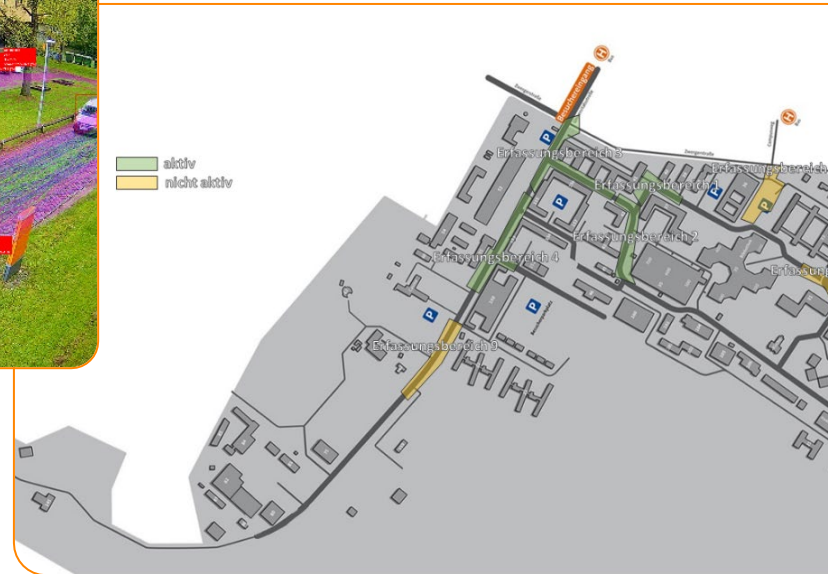
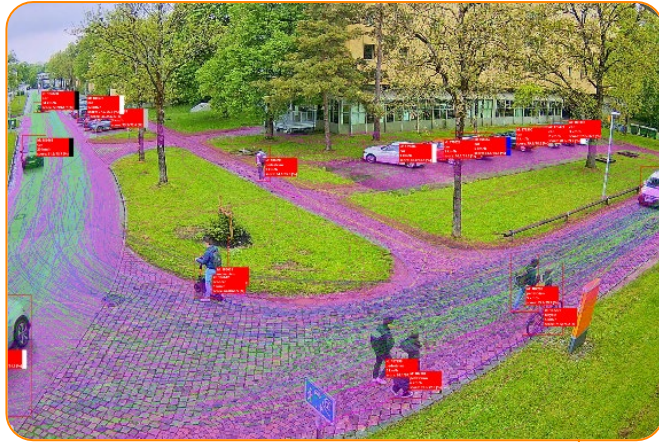
der Bundeswehr
Universität München 



**MAKING THE VISIONS OF THE FUTURE
REALIZABLE.**
MORE
Munich **Mobility Research** Campus 

Project MORE – Raum&Verkehr

Verkehrsdatenerfassungssystem



Mikromobilitäts-Sharing-System



Verkehrssteuerung



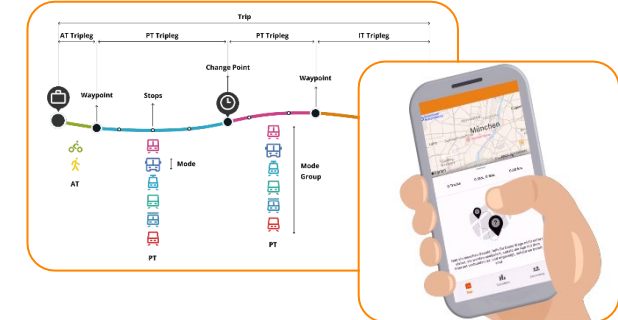
On-Demand-Mobility-Forschung



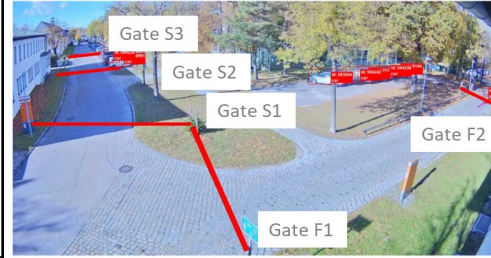
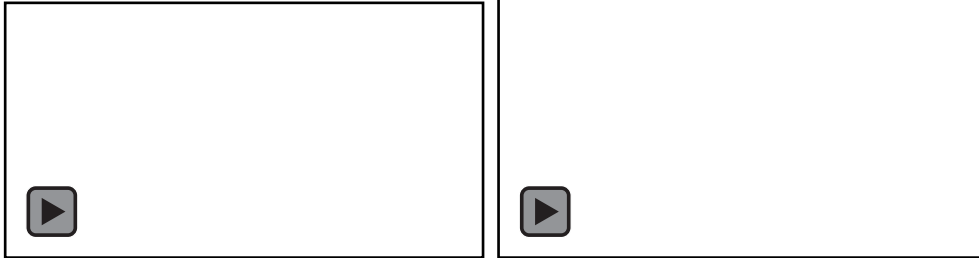
Fahrradsimulator + Fahrsimulator



Mobilitätserhebung



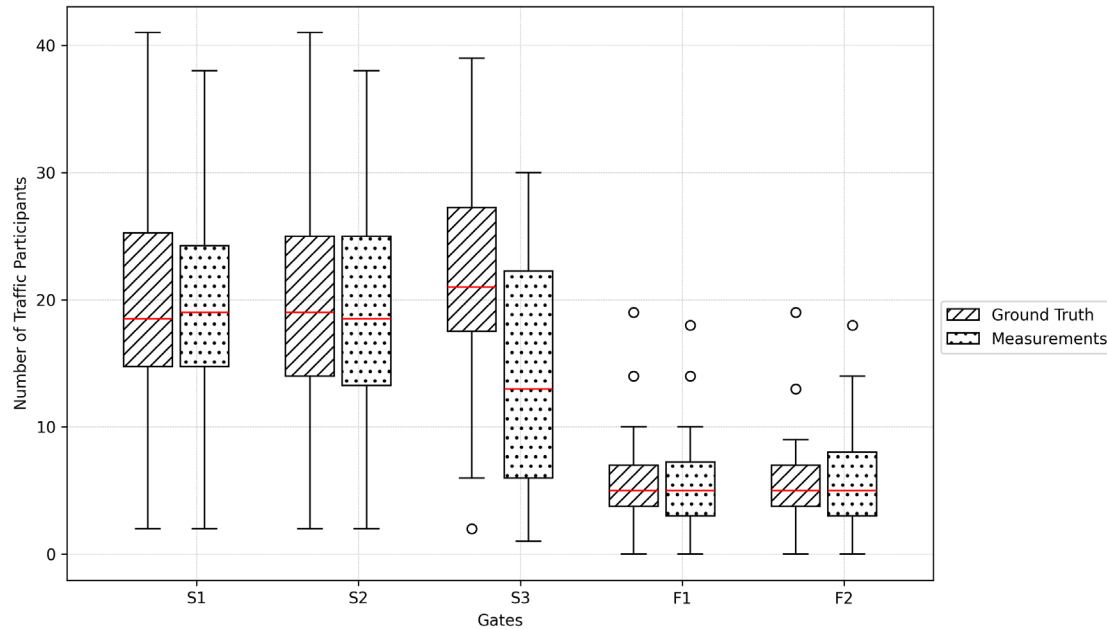
Project MORE – Verkehrsdatenerfassungssystem



Camera measurements have no significant errors (p-value > 0.05)

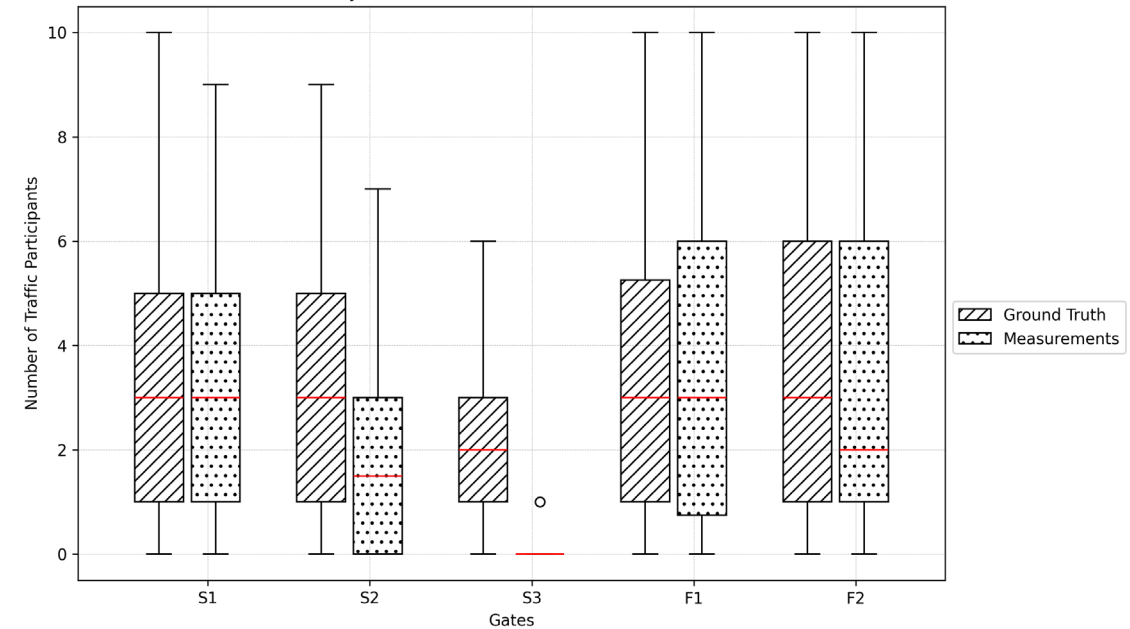
Camera measurements have significant errors (p-value < 0.05)

Car - Ground Truth vs Measurements



n=32	S1	S2	S3	F1	F2
RMSE:	1.4895	1.9605	8.3666	0.5356	0.7289
p-value	0.9077	0.6593	1.577e-10	0.5590	0.8127

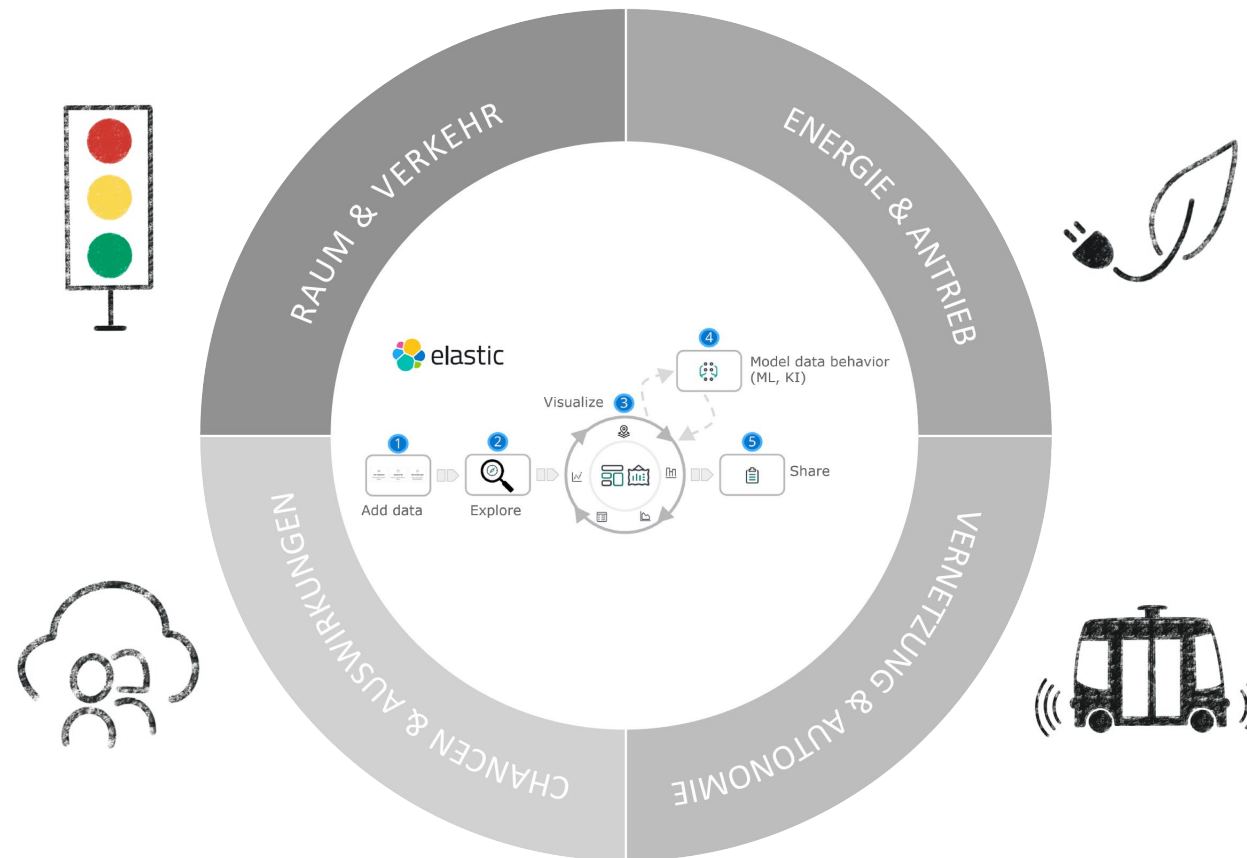
Bicycle - Ground Truth vs Measurements



n=32	S1	S2	S3	F1	F2
RMSE:	0.6124	2.1065	2.6339	0.5863	0.8101
p-value	0.5720	0.0006	7.202e-08	0.7683	0.0478

Project MORE – Datenfusionierung

Data Fusion Analytics Engine (basiert auf elasticsearch)



<https://www.unibw.de/more>
<https://www.elastic.co/de/elasticsearch>

Thank you!



Gefördert durch  dtec.bw

 Finanziert von der
Europäischen Union
NextGenerationEU